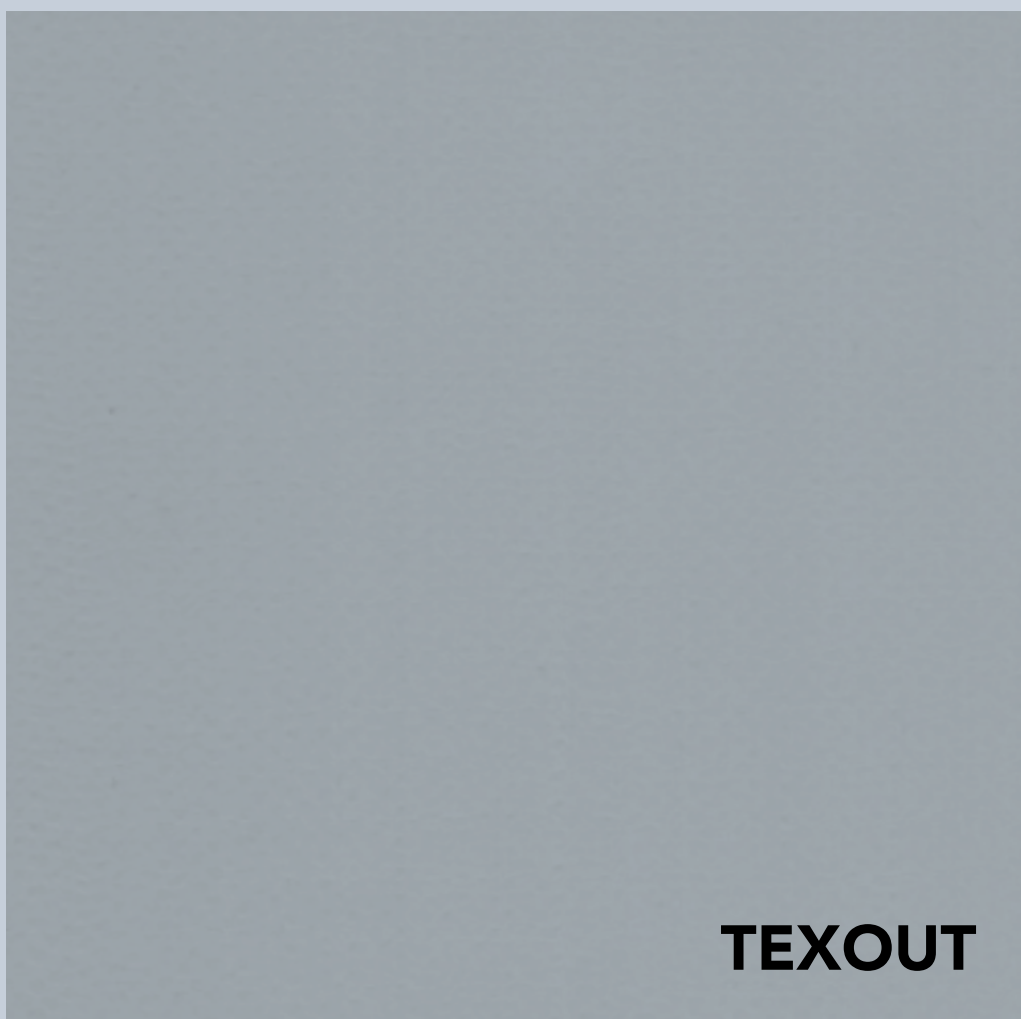


# BLOCKOUT TEXTILES



**TEXOUT**

sevensun

# TEXOUT OPATEX PRO

COD. 6693



## TYPOLOGY

High tenacity 1100 Dtex Polyester base fabric with PVC coating.

## FEATURES

850 gr/m<sup>2</sup> for longer duration. Blockout thanks to black internal double coating. The embossed finishing on the inner side gives a textile appearance and a dynamic effect on the surface. Outer side anti-dust PU. Two different tones on outer and inner side allow colour matching of with surrounding structures while champagne/white inner side gives brighter room under the structure. Flame retardant according to Italian CL.2, German B1, French M2 and European Euroclass. 5-year warranty.

## APPLICATIONS

Ideal for pergolas and gazebo.



## COLORS

FRONT

BACK



112

112



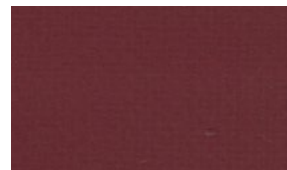
272

272

## COLORS

EXTERNAL SIDE

INTERNAL SIDE



444



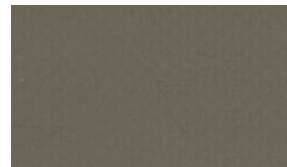
444



632



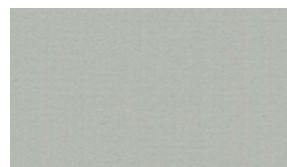
632



819



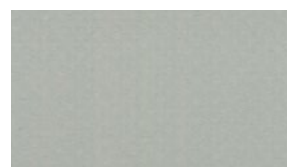
819



877



877



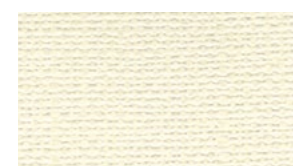
878



878



815



815

# TEXOUT OPATEX PRO

	IT	EN	DE	FR
<b>Filato / Yarn / Garn / Fil</b>	ordito: poliestere 1100 Dtex trama: poliestere 1100 Dtex	warp: polyester 1100 Dtex weft: polyester 1100 Dtex	Kette: Polyester 1100 Dtex Schuss: Polyester 1100 Dtex	chaîne: polyester 1100 Dtex trame: polyester 1100 Dtex
<b>Costruzione / Construction / Einstellung / Contexture</b>	ordito: 8 fili/cm trama: 8 fili/cm	warp: 8 yarns/cm weft: 8 yarns/cm	Kette: 8 Fäden/cm Schuss: 8 Fäden/cm	chaîne: 8 fils/cm trame: 8 fils/cm
<b>Spessore / Thickness / Stärke / Epaisseur</b>	0,68 mm	0,68 mm	0,68 mm	0,68 mm
<b>Peso tessuto / Weight / Gewicht / Poids (ISO 2286-2)</b>	ca 850 g/m <sup>2</sup>	ca 850 g/m <sup>2</sup>	ca 850 g/m <sup>2</sup>	ca 850 g/m <sup>2</sup>
<b>Ignifugazione / Flammability / Entflammbarkeit / Ignifugation</b>	CL.2 (IT) B1 (DE) M2 (FR) Euroclasse (B-s2,d0)	CL.2 (IT) B1 (DE) M2 (FR) Euroclasse (B-s2,d0)	CL.2 (IT) B1 (DE) M2 (FR) Euroclasse (B-s2,d0)	CL.2 (IT) B1 (DE) M2 (FR) Euroclasse (B-s2,d0)
<b>Finissaggio / Finish / Schlusslack / Finition</b>	lato esterno: laccato opaco con vernice PU lato interno: laccato opaco goffrato. Impermeabile.	outer side: matt PU lacquered inner side: matt lacquered with embossing. Waterproof.	Außenseite: matt lackiert mit PU-Schlusslack Innenseite: matt lackiert mit Struktur. Wasserdicht.	côté externe: lacqué opaque avec vernis PU côté interne: lacqué opaque gaufré. Imperméable.
<b>Resistenza alla trazione / Breaking strength / Reisskraft / Résistance à la traction (ISO 1421)</b>	ordito: ca 250 DaN/5 cm trama: ca 250 DaN/5 cm	warp: ca 250 DaN/5 cm weft: ca 250 DaN/5 cm	Kette: ca 250 DaN/5 cm Schuss: ca 250 DaN/5 cm	chaîne: ca 250 DaN/5 cm trame: ca 250 DaN/5 cm
<b>Resistenza allo strappo / Tear strength / Weiterreißfestigkeit / Résistance à la déchirure (DIN 53363)</b>	ordito: ca 25 DaN trama: ca 20 DaN	warp: ca 25 DaN weft: ca 20 DaN	Kette: ca 25 DaN Schuss: ca 20 DaN	chaîne: ca 25 DaN trame: ca 20 DaN
<b>Resistenza alla luce / Light Fastness / Lichtechtheit / Tenue à la lumière (DIN 53388)</b>	livello 7/8	level 7/8	Niveau 7/8	niveau 7/8
<b>Resistenza alle temperature / Temperature resistance / Temperaturbeständigkeit / Résistance à la température</b>	+70°C / -30°C	+70°C / -30°C	+70°C / -30°C	+70°C / -30°C
<b>Aderenza / Adhesion / Haftung / Adhèrence (ISO 2411)</b>	ca 10 DaN/5 cm	ca 10 DaN/5 cm	ca 10 DaN/5 cm	ca 10 DaN/5 cm
<b>Altezza del tessuto / Roll width / Breite / Laize</b>	300 cm	300 cm	300 cm	300 cm
<b>Lunghezza rotolo / Roll length / Rollenlänge / Longueur de la pièce</b>	ca 60 m (standard) ca 250 m (su richiesta)	ca 60 m (standard) ca 250 m (upon request)	ca 60 m (standard) ca 250 m (auf Anfrage)	ca 60 m (standard) ca 250 m (sur demande)



# TEXOUT OPATEX WAY

COD. 8350



## TPOLOGY

1100 Dtex Polyester base fabric with PVC coating.

## FEATURES

730 gr/m<sup>2</sup> for longer duration. Blockout thanks to black internal coating. The embossed finishing on the inner side gives a textile appearance and a dynamic effect on the surface. Outer side anti-dust acrylic lacquered. Flame retardant according to Italian CL 2. 5-year warranty.

## APPLICATIONS

Ideal for pergolas and gazebo.

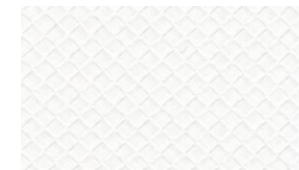
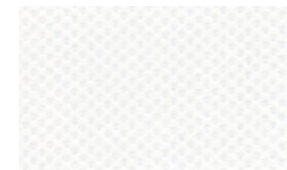
## CARE AND CLEANING

A frequent cleaning is advisable to avoid pollution migration in the PVC. Use a soft sponge or cloth. Avoid abrasive substances or facilities and strong rubbing. Do not use high pressure water jet cleaner while use of low pressure water jet cleaner is allowed with cold water. Cleaning with TEXOUT APCO INTENSE CLEANER, TEXOUT APCO FAST CLEANER is suggested. Use only non ionic detergents, with low percentage of alcohol and avoid strongly alkaline or acid detergents, highly polar solvents, oxidizers like hypochlorite or hydrogen peroxide. The concentration of the detergent can vary according to the dirt degree of the material. The occasional use of Hydrocarbons like naphtha, fuel or petroleum ether is permitted to remove grease stain. Rinse thoroughly with running water and let the tarp or awning dry carefully before folding to avoid mould. It is advisable to treat the material periodically with a specific product (TEXOUT APCO PROTECTANCT) creating a protective film maintaining brightness and durability as well.

## COLORS

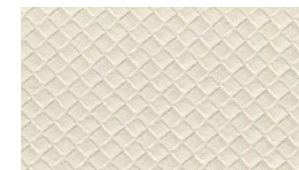
EXTERNAL SIDE

INTERNAL SIDE



112

112



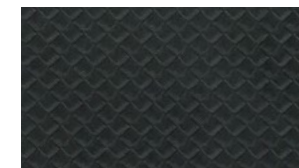
264

264



802

802



904

904



# TEXOUT OPATEX WAY

	IT	EN	DE	FR
<b>Filato / Yarn / Garn / Fil</b>	ordito: poliestere 1100 Dtex spalmato PVC trama: poliestere 1100 Dtex spalmato PVC	warp: polyester 1100 Dtex spalmato PVC weft: polyester 1100 Dtex spalmato PVC	Kette: Polyester 1100 Dtex spalmato PVC Schuss: Polyester 1100 Dtex spalmato PVC	chaîne: polyester 1100 Dtex spalmato PVC trame: polyester 1100 Dtex spalmato PVC
<b>Costruzione / Construction / Einstellung / Contexture</b>	ordito: 8 fili/cm trama: 8 fili/cm	warp: 8 yarns/cm weft: 8 yarns/cm	Kette: 8 Fäden/cm Schuss: 8 Fäden/cm	chaîne: 8 fils/cm trame: 8 fils/cm
<b>Spessore / Thickness / Stärke / Epaisseur</b>	0,57 mm	0,57 mm	0,57 mm	0,57 mm
<b>Peso tessuto / Weight / Gewicht / Poids (ISO 2286-2)</b>	ca 730 g/m <sup>2</sup>	ca 730 g/m <sup>2</sup>	ca 730 g/m <sup>2</sup>	ca 730 g/m <sup>2</sup>
<b>Ignifugazione / Flammability Entflammbarkeit / Ignifugation</b>	CL 2 (IT- UNI 9177)	CL 2 (IT- UNI 9177)	CL 2 (IT- UNI 9177)	CL 2 (IT- UNI 9177)
<b>Finissaggio / Finish / Schlusslack / Finition</b>	lato esterno: laccato opaco lato interno: laccato opaco goffrato	outer side: matt lacquered inner side: matt lacquered with embossing	Außenseite: matt lackiert Innenseite: matt lackiert mit Struktur	côté externe: lacqué opaque côté interne: lacqué opaque gaufré
<b>Resistenza alla trazione Breaking strength Reisskraft Résistance à la traction (ISO 1421)</b>	ordito: ca 300 DaN/5 cm trama: ca 200 DaN/5 cm	warp: ca 300 DaN/5 cm weft: ca 200 DaN/5 cm	Kette: ca 300 DaN/5 cm Schuss: ca 200 DaN/5 cm	chaîne: ca 300 DaN/5 cm trame: ca 200 DaN/5 cm
<b>Resistenza allo strappo Tear strength Weiterreißfestigkeit Résistance à la déchirure (DIN 53363)</b>	ordito: ca 30 DaN trama: ca 26 DaN	warp: ca 30 DaN weft: ca 26 DaN	Kette: ca 30 DaN Schuss: ca 26 DaN	chaîne: ca 30 DaN trame: ca 26 DaN
<b>Resistenza alla luce Light Fastness Lichtechtheit Tenue à la lumière (DIN 53388)</b>	livello 7/8	level 7/8	Niveau 7/8	niveau 7/8
<b>Resistenza alle temperature Temperature resistance Temperaturbeständigkeit Résistance à la température</b>	+70°C / -30°C	+70°C / -30°C	+70°C / -30°C	+70°C / -30°C
<b>Aderenza / Adhesion / Haftung / Adhèrence (ISO 2411)</b>	ca 10 DaN/5 cm	ca 10 DaN/5 cm	ca 10 DaN/5 cm	ca 10 DaN/5 cm
<b>Altezza del tessuto / Roll width / Breite / Laize</b>	250 cm	250 cm	250 cm	250 cm
<b>Lunghezza rotolo / Roll length / Rollenlänge / Longueur de la pièce</b>	ca 50 m (standard)	ca 50 m (standard)	ca 50 m (standard)	ca 50 m (standard)

HELLENIC SHADING SYSTEMS LTD  
42, Katsimpa Str. 173 42  
Ag. Dimitrios, Athens Greece  
T +30 210 9904030  
[www.sevensun.design](http://www.sevensun.design)  
[info@sevensun.design](mailto:info@sevensun.design)

